

DIRECTIONS OF USE

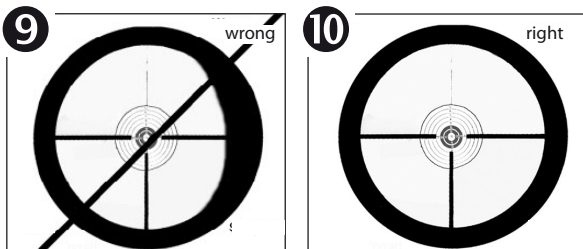
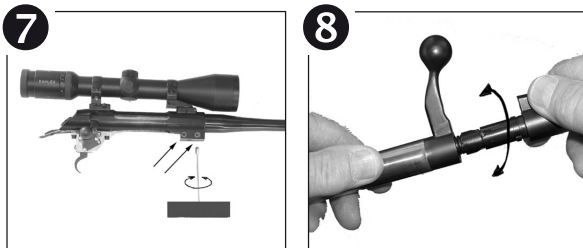
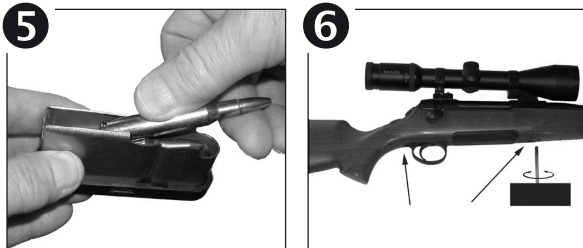
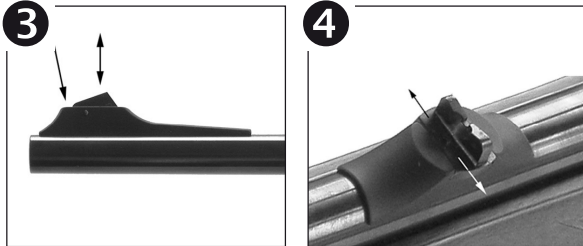
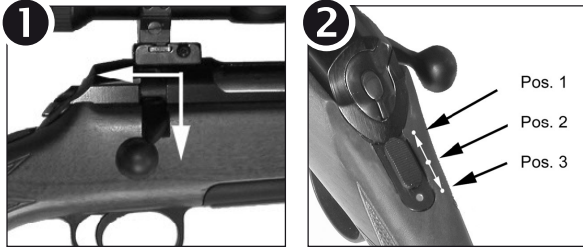
Version for printout

TITAN 3 | TITAN 6



Rößler Waffen GmbH
(Roessler Waffen GmbH)

Prof. Schlosser Straße 31
A-6330 Kufstein
Tel.: +43 (0) 5372 90810
Fax: +43 (0) 5372 90811
office@jagd-shop.at
www.jagd-shop.at



HANDLING

Basic safety rules:

Never point the weapon at anyone, even when it is not loaded. Get into the habit of holding your weapon in a way that will not put people, animals or property at risk. Make sure that a bullet trap is always available during practice shooting to prevent any danger from stray bullets. Remember that a bullet can fly as far as 5000 m and there may be ricochets, depending on the angle of impact, caused by hitting water or hard objects. Always wear hearing protection when shooting.

Preparation:

Before shooting make sure that the barrel bore has been degreased and that there is nothing blocking it. Clean the bore from the breech end using a plastic-coated cleaning rod with a brush covered with cotton or felt. First remove the bolt while pulling the trigger ❶ all the way back. Never try to force it. Any surplus oil on the receiver and bolt should be removed with a clean, soft cloth.

Loading:

Your weapon is fitted with a detachable magazine clip with a capacity of 2 or 3 cartridges depending on calibre, 4/5 shot magazines are available. Make sure you only use undamaged and correctly designed cartridges that have the calibre recorded on the barrel.

1. Pull the magazine out of the rifle and load it with cartridges.
2. Insert the loaded magazine into the weapon until it latches into position.
3. Turn the bolt lever upwards and pull all the way back.
4. Push the bolt lever forwards and lock by pushing it downward. The rifle is now loaded and cocked. It is ready to fire. If you will not shoot immediately, set the safety-button in "safe" position ❷.

Safety catch:

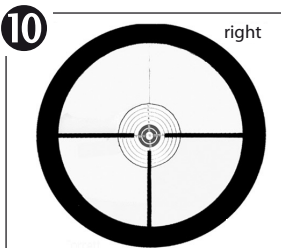
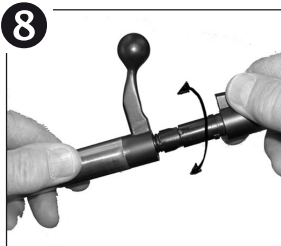
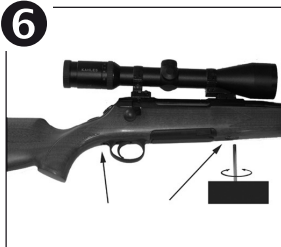
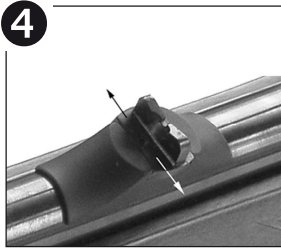
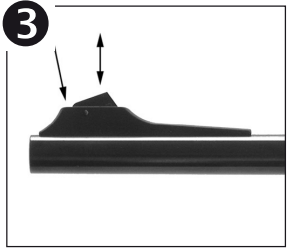
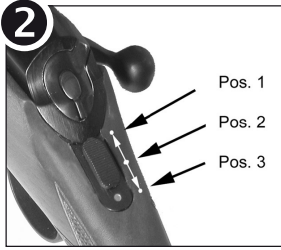
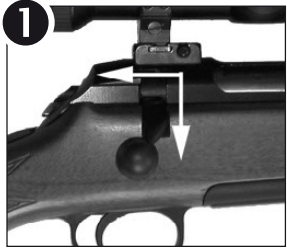
The weapon is fitted with a safety catch with a bolt lock ❷. The safety catch will only operate if the chamber is fully closed and cocked.

Safety functions for model with shotgun trigger:

- **Safety-button Pos. 1:** ready to fire
- **Safety-button Pos. 2:** trigger is locked
- **Safety-button Pos. 3:** trigger and bolt are locked

Safety functions for model with single set hair trigger:

- **Safety-button Pos. 1:** ready to fire
- **Safety-button Pos. 2:** trigger and bolt are locked



Unloading:

Push the safety catch forward towards the middle (Pos. 2)

Open the bolt and pull it all the way back. If there is a cartridge in the chamber it will be ejected.

Remove the magazine.

Push the bolt lever forwards and downwards while at the same time pulling the trigger. The rifle is now unloaded and uncocked.

Remove the cartridges from the magazine and reinsert the empty magazine.

Trigger:

Both the one-stage and the optional single set triggers have been adjusted at the factory to give optimum balance. Trigger travel and pull can be adjusted on all triggers.

Important notice:

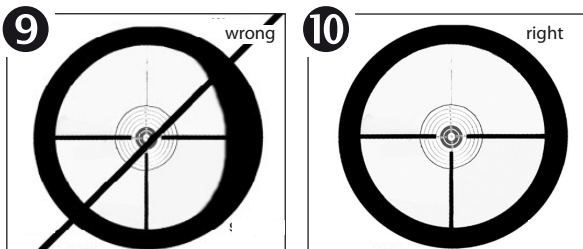
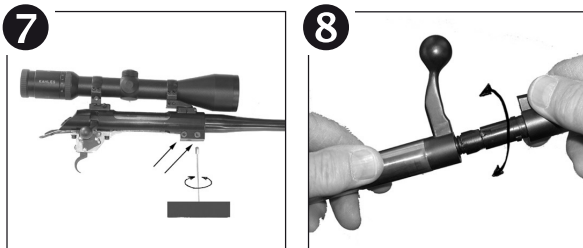
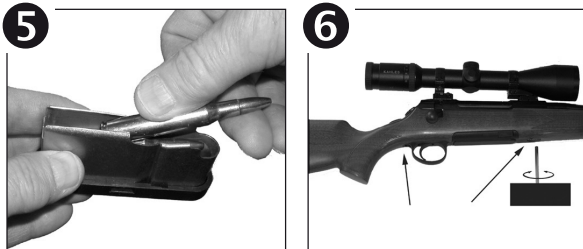
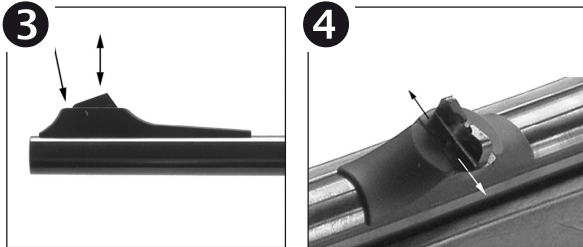
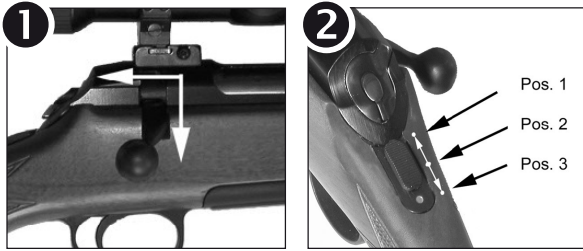
Triggers which have been incorrectly set up with excessive sensitivity have caused many tragic accidents with firearms. In any case, all adjustments should always be carried out and checked by an expert who is familiar with this type of work.

MAINTENANCE, DISMANTLING AND ASSEMBLY

Maintenance:

We recommend the following procedure for cleaning and servicing your rifle:

1. First make sure that the weapon is not loaded and that the magazine is empty.
2. Open the bolt and remove it. (6001).
3. Remove the magazine from the rifle as described in the section on "unloading".
4. As a matter of principle: the bore should always be cleaned from the breech end using a cleaning rod and felt or cotton. Never try to force it.
5. After cleaning, lightly oil the bore.
6. We recommend that you clean the bore every time you go shooting.
7. All the other parts only need to be lightly oiled from time to time using a cloth soaked in oil.
8. The rifle must always be cleaned and oiled if it has been used in bad weather.



To service the cocking parts inside the bolt you must separate the cocking piece from the bolt cylinder. To do this proceed as follows ❸:

1. Take the bolt in your left hand and use your right Hand to turn the cocking piece (6014) clockwise until you can feel the catch (after approx. 40°).
2. Now pull the cocking piece out of the lock cylinder; the firing pin drops out to the rear (figure).
3. All the cocking parts of the bolt can now be assembled, cleaned and oiled without any difficulty.
4. After cleaning replace the firing pin in the bolt cylinder, push the cocking piece back into the bolt cylinder and turn it anticlockwise until the bolt sleeve latches into position.

Note: Because of the high feather tension, you should not dismantle the rifle any further! Only use high quality gun oil to service your rifle.

Changing the barrel:

1. Remove the bolt as you pull the trigger all the way back ❶.
2. Remove the stock by unscrewing the screws ❷.
3. Loosen the screws 6033.
4. Pull the barrel out of its housing and replace it with the other barrel. Pay attention to the catch.
5. Insert the bolt and lock it.
Inserting the bolt into the receiver:
 - * Pull back the trigger
 - * Insert the bolt at about 20° anti-clockwise into the Receiver until, it appears in the ejector window.
 - * Turn the bolt, aligning it with the receiver (approximately 20° clockwise), until it is engaged

6. Tighten the screw No. 6003 approximately 7 Nm.
7. Screw on the stock approximately 7 Nm.
8. Shoot the rifle and adjust the sights.

Sighting in:

After changing the barrel and the ammunition you have to sight the rifle again. If you have a rifle scope follow the manufacturer's instructions (manual) ❸❹❺❻. The open sights should be adjusted as follows: If the point of impact is on the right: correct the sights to the right; if on the left correct to the left; if too high adjust the front blade upwards; if too low adjust the front blade downwards.

TECHNICAL DATA

1. Barrel: Special barrels with constant pitch rifling. Barrel length 570 mm standard calibres, 610 mm magnum calibres.

2. Interchangeable barrels:

- Available calibers for TITAN 3: .222Rem.; .223Rem.; 5,6x50Mag.; .22-250
- Available calibers for TITAN 6: 6mmNormaBR; 6mm XC; .243Win.; .25-06Rem.; 6,5-284; 6,5x47Lapua; 6,5x55Se; 6,5x57; 6,5x65RWS; 7x57; 7x64; .270Win.; 7mm-08Rem.; 7,62x39; .308Win.; .30-06Sprg.; .358Win.; 8x57IS; 9,3x62; 6,5x68; 8x68S; 7mmRem.Mag.; .270WSM; .300WSM; .300Win.Mag.; .338Win.Mag.; .375Ruger;

3. Stock: Walnut, recoil cap, chequered pistol grip and forearm, sling swivel, cheek piece.

4. Action: Symmetrical, 6 locking lugs, locks directly at the cartridge base with only 60° bolt lift, double cocking cam guide for extremely short ignition lock time of only 1.6 milliseconds.

5. Trigger: Standard one-stage trigger or French hair trigger.

Single trigger: short, crisp trigger with trigger travel and pull adjustment. Direct action trigger travel. Set to 0.3 – 0.4 mm. French hair trigger: set by pushing trigger forward. If the trigger is not set, it acts like a single trigger.

6. Safety catch: Single trigger: On pistol grip. Ergonomically designed sliding 3-point-safety-catch, triple action through double cams and locking lever; sear assembly and bolt lock. French hair-trigger: same as single trigger, yet with 2-point-safety-catch.

7. Magazine: Detachable clip magazine – when re-ordering please state calibre. Capacity: 2 or 3 shots depending on calibres: 4/5 shots alternative.

8. Sights: Front sight: adjustable for alternation; Rear sight: for windage.

9. Scope mount: Pre-bored and taped thread 6-48UNS on receiver. Scope mounts are special accessories.

Weight: ca. 2.9 kg

SPARE PARTS

6001 Housing
6002 Barrel (please state calibre)
6003 Clamp screw
6004 Holder for screws
6005 Bolt assembled compl. stand. cal.
6006 Extractor standard calibres
6007 Extractor magnum calibres
6008 Extractor spring
6009 Ejector
6010 Ejector spring
6011 Spiral pin DIN 7343-2x8
6012 Bolt assembled stand. cal.
6013 Firing pin
6014 Cocking sleeve, compl.

6015 Cocking sleeve housing
6016 Striker
6017 Safety washer
6018 Pin DIN 6325-3x12
6019 Spiral pin DIN 7343-3x6
6020 Cocking bent
6021 Bushing
6022 Spring for firing pin
6023 Shot gun trigger complete
6024 Safety lever
6025 Safety plate
6026 Safety catch slide
6027 Screw DIN 912-M4x14
6028 Spring washer DIN 127-M4

6029 Walnut stock
6030 Sling swivel front
6031 Magazine frame
6032 Screw DIN 7984-M6x25
6033 Screw DIN 912-M6x45
6034 Magazine standard calibre
6035 Magazine magn. calibre
6036 Magazine (+2 rounds) stand. cal.
6037 Magazine (+2 rounds) magn. cal.
6038 Cover for Ribe 5
6039 Sling swivel rear
6040 Bolt assembled magnum calibres
6041 Screw DIN 913-M3x3
6042 Notch

6043 Nut DIN 546-M4
6044 Rear sight base
6045 Rear sight complete
6046 Front blade
6047 Grooved pin DIN 1472-2x10
6048 Bolt assembled compl. magn. cal.
6049 Spring
6050 Screw DIN 7984-M 3x5
6051 Front sight base
6052 Front blade complete
6053 Single set hair trigger

